

HAVELOCK NORTH HIGH SCHOOL

Future Pathways

Gateway 2023



COMBINING ACADEMIC STUDY AND INDUSTRY TRAINING



Future pathways to careers

Havelock North High School

Careers Centre



THE GATEWAY CLASS PROGRAMME

The Gateway programme at Havelock North High School is an opportunity for students in their final year at school to combine academic study with industry training and experience. Students benefit from enhanced skills, and knowledge of the workplace that may lead into apprenticeships, employment or further training opportunities.

The Gateway programme takes up one of the students six (Yr12) or five (Yr13) timetable subject lines. Students will be in a Gateway class during this line, as they are for any other subject. Classroom time allows for the completion of core unit standards that will prepare students for a work placement, and then specific industry unit standards that relate to their Gateway career area of choice. They will also have one day a week in a workplace during term two and three.

The school works in partnership with local industry and businesses to provide work placements for Gateway students one day per week during term two and/or three. An individual learning plan is created in conjunction with the employer, school and student, with a clear understanding of the knowledge and industry skills to be attained and unit standards to be assessed.

Students need to complete an online application for the Gateway Programme.

The online application information can be found at the back of this booklet. Once completed, a selection process will follow which includes an interview with both students and their parents/caregivers. Students will be notified by the end of term 3 whether or not they have been accepted into the Gateway programme for 2023.

All standards achieved on the Gateway programme are recorded on the student's NZQA Record of Learning and count towards NCEA at the appropriate level.

An example of a suitable Gateway applicant:

A year 12/13 student who:

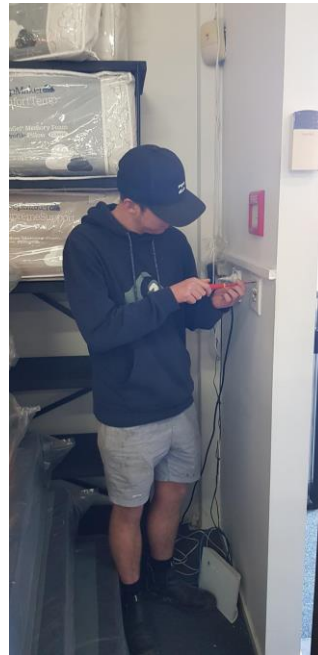
is in their last year at school

has as a clear idea of what career path they wish to pursue or investigate

has good school attendance

wishes to use the Gateway programme as a means of entering directly into the workplace at the end of the year, seek an apprenticeship or continue onto pre-trade and/or tertiary study.

This means the Gateway Programme becomes a key focus of their timetable while maintaining four or five conventional subjects. This all works to create a clear pathway towards the students chosen career option(s).



GATEWAY COURSES

It is intended that the Gateway Programme will offer courses in the following industry areas:

- **Agriculture**
- **Animal Care/Vet Nursing**
- **Aquatics**
- **Automotive Trades**
- **Aviation**
- **Baking**
- **Beauty Therapy**
- **Boat Building**
- **Butchery**
- **Construction:** *Carpentry/Building*
- **Construction:** *Cement and Concrete*
- **Construction:** *Glass and Glazing*
- **Construction:** *Joinery: Aluminium*
- **Construction:** *Joinery: Wood*
- **Early Childcare Education**
- **Electrical/Electrical Supply**
- **Engineering**
- **Equine**
- **Hairdressing**
- **Healthcare**
- **Horticulture**
 - *Fruit Production*
 - *Nursery Production*
 - *Arboriculture*
 - *Viticulture*
- **Hospitality**
- **Plumbing**
- **Retail**
- **Sport and Recreation**
- **Travel and Tourism**

If a student wishes to pursue a different career area that is not stated above, we ask that they talk with Mrs Tasker or Mrs Fenton in the Careers Centre to discuss their options. Alternative Gateway courses will depend on the availability of relevant theory material and suitable work-placements.



GATEWAY GENERAL OBJECTIVES

- To provide students with opportunities to obtain quality industry training while still at school. Therefore, better preparing them for future employment and extending their school-based studies
- Students achieve industry unit standards through their Gateway workplace and classroom theory work. These are recorded on their NZQA Record of Learning and, as in any other subject, count towards their NCEA at the appropriate level
- Employers benefit from involvement with the programme through improved public relations and contributing to local needs. In the longer term, employers have the opportunity for more efficient and effective recruitment, which can contribute to increased productivity and an enhanced company skill base
- To develop closer links between Havelock North High School, local industry and business providers. The development of a learning plan is essential for each student
- To extend the range and mix of courses available to year 12 - 13 students



WORKPLACE TRAINING

As part of a student's Gateway programme, a work placement and suitable unit standards relating to their intended career pathway are organised. While they are at work, students will be visited by the schools Gateway Workplace Co-ordinator to monitor their progress.

Prior to the student starting their work placement, an individual plan will be drawn up with consultation between the student, the employer and the school, specifying the expectations in terms of outcomes, behaviour and attendance.

School Gateway staff will also liaise with Industry Training Organisations (ITOs) to establish an appropriate "on the job" training programme and assessment for the student.

GATEWAY FUNDS ALL SPECIALIST WORKPLACE CLOTHING AND TOOLS WHERE REQUIRED.



STUDENT RESPONSIBILITIES AND OBLIGATIONS

A total commitment is required of students accepted into the Gateway Programme.

- the expectation of a faultless attendance record at school and in the workplace

THIS IS THE MOST CRUCIAL REQUIREMENT FOR INCLUSION AND CONTINUED PARTICIPATION IN THE PROGRAMME

- a commitment from the student to perform and work to expected industry standards; this covers timeliness, correct industry attire, the undertaking of all relevant instructions and to comply with all Health and Safety regulations
- a requirement that all industry theory unit standards set are undertaken on time and completed to a high standard. Students need to have the ability to achieve a minimum of 20 credits at level 2/3 in their Gateway area of choice
- an understanding that all transport requirements to and from the student's workplace or any training outside school is the responsibility of the student parents/caregivers



GATEWAY RECRUITMENT AND APPLICATION PROCESS

If you are interested in applying for the gateway programme for 2023, please ensure you have read the Gateway Booklet, discussed it with your parents, and fill out the electronic form below.

We will then arrange a time to meet with you and your parents to discuss the gateway programme you are interested in and explain in more detail how the programme works. This will also help to gauge whether gateway is suitable for you, and to look at the vocational pathway you have chosen.

We will also ask form teachers and house tutors to complete a short reference for you.

There is growing interest in this programme and spaces are limited. Student's previous commitment and behaviour at Havelock North High School will be taken into consideration as part of the application process.

·Students need to apply for the Gateway programme.



CONTACTS HNHS CAREERS CENTRE

Transition Services Manager

Helen Tasker
tsk@hnhs.school.nz
W: 06 877 8129 ext 732
M: 021 272 7442

Careers Advisor

Amanda Onekawa
okw@hnhs.school.nz
W: 06 877 8129 ext 732
M: 027 543 4567

Gateway Workplace Co-ordinator

Raewynn White
wht@hnhs.school.nz
W: 06 877 8129 ext 753
M: 022 078 8123

Careers Centre Administrator

Amanda Knight
kng@hnhs.school.nz
W: 06 877 8129 ext 753

Students and their parents are very welcome to contact the Careers Centre staff if they have any questions or require more information.



Future pathways to careers

Havelock North High School

Careers Centre