

START LINE

SWIM COURSE

BRIEFING /
NUMBERING
AREA

BIKE COURSE

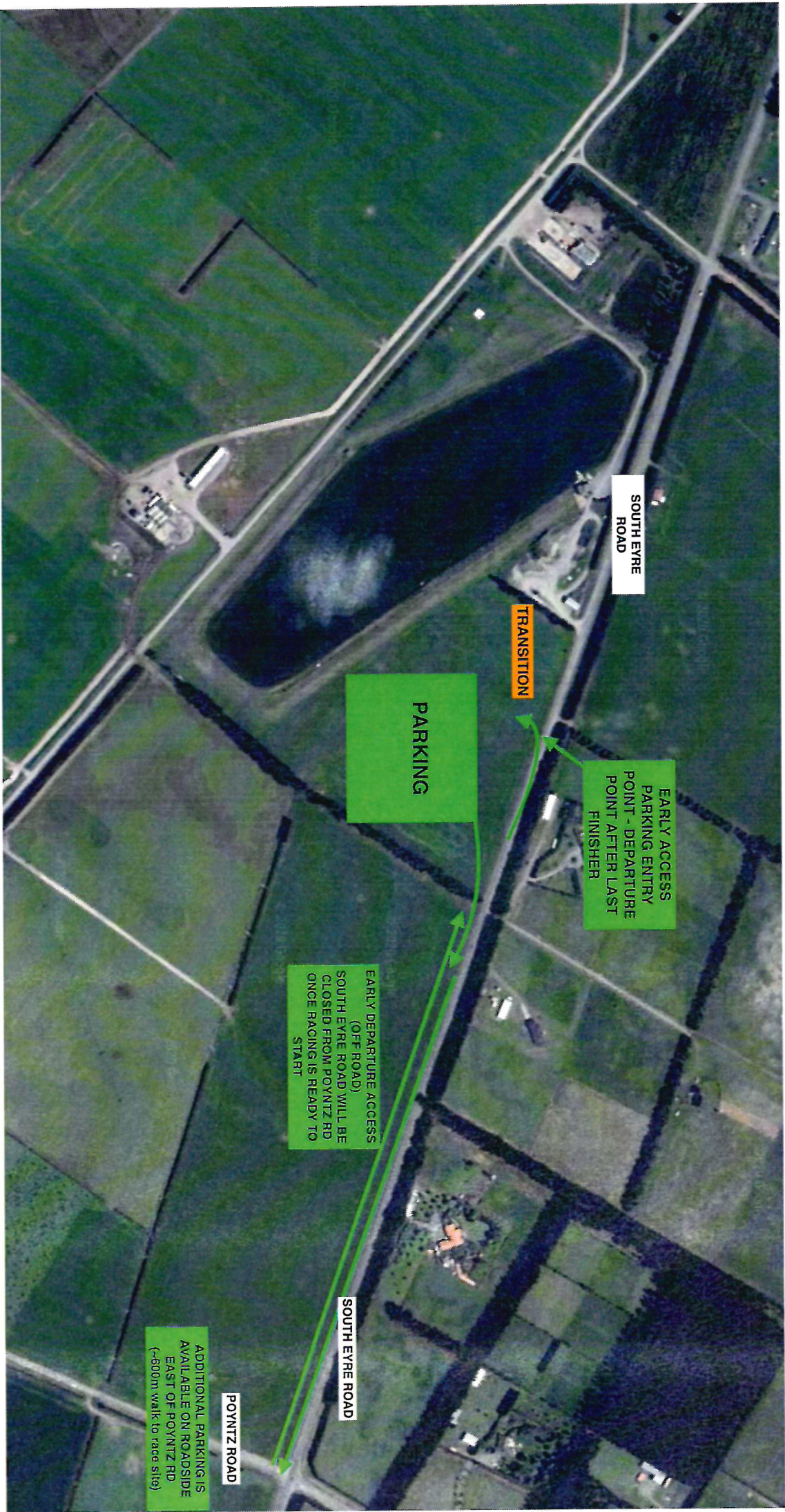
TRANSITION

FINISH

RUN COURSE

YEAR 5/6
swim exit

YEAR 7/8
swim exit



SOUTH EYRE ROAD

TRANSITION

PARKING

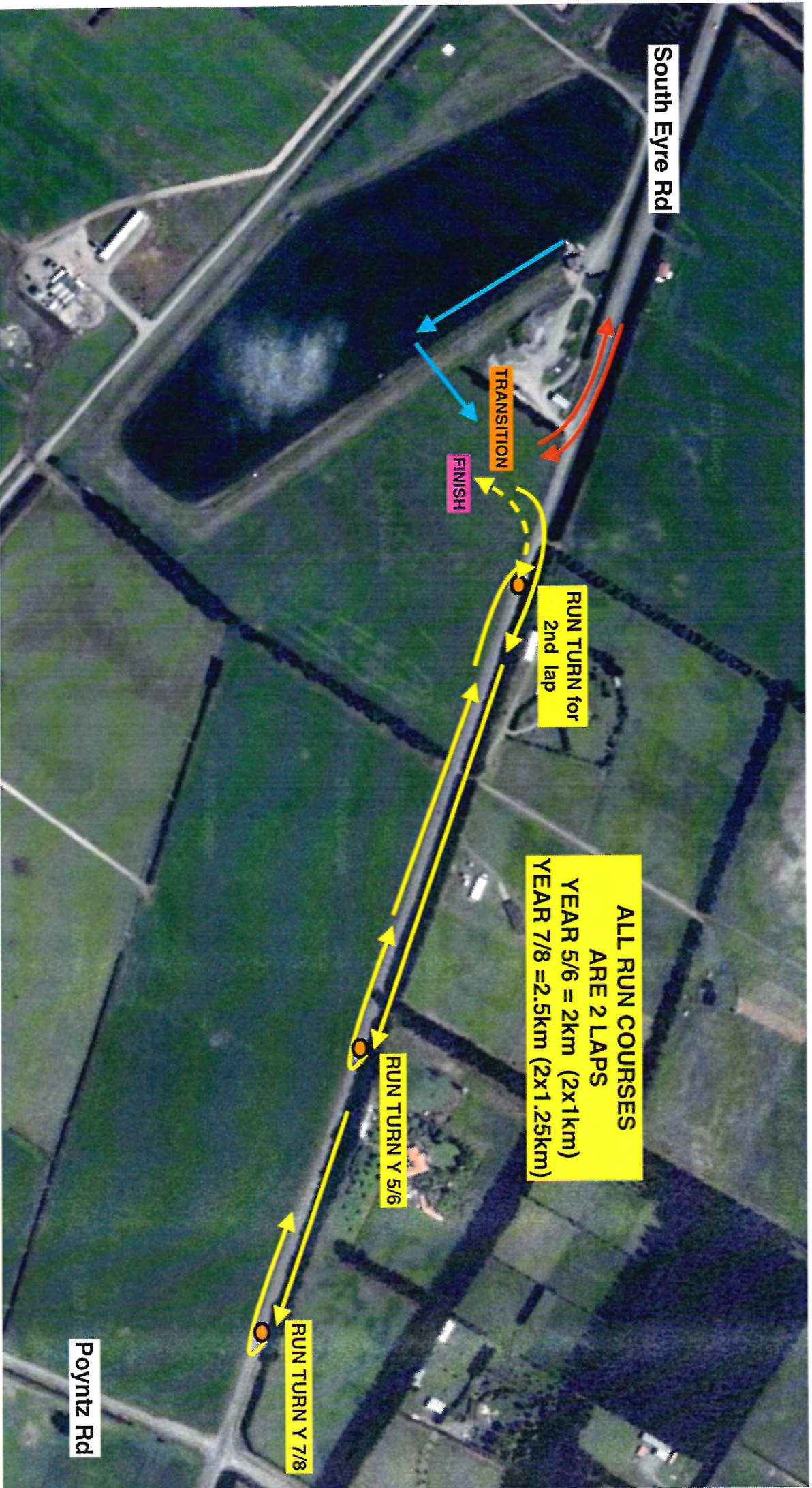
EARLY ACCESS
PARKING, ENTRY
POINT - DEPARTURE
POINT AFTER LAST
FINISHER

EARLY DEPARTURE ACCESS
(OFF ROAD)
SOUTH EYRE ROAD WILL BE
CLOSED FROM POYNITZ RD
ONCE RACING IS READY TO
START

POYNITZ ROAD

SOUTH EYRE ROAD

ADDITIONAL PARKING IS
AVAILABLE ON ROADSIDE
EAST OF POYNITZ RD
(~600m walk to race site)



South Eyre Rd

TRANSITION

FINISH

RUN TURN for
2nd lap

ALL RUN COURSES
ARE 2 LAPS
YEAR 5/6 = 2km (2x1km)
YEAR 7/8 = 2.5km (2x1.25km)

RUN TURN Y 5/6

RUN TURN Y 7/8

Poyntz Rd

