



## South Island O'pen BIC Championships

7<sup>th</sup> - 8<sup>th</sup> April 2018

The Organising Authority is Ravensbourne Boating Club Inc,  
Ravensbourne Dunedin

NB: The notation '[DP]' in a rule in the SI means that the penalty for a breach of that rule may, at the discretion of the protest committee, be less than disqualification.

### 1 RULES

---

1.1 See NoR 1.

1.2 Further to NoR 1.4, the "O'pen BIC Class on the Water Umpiring Rules" detailed in Attachment 3 shall apply.

### 2 NOTICES TO COMPETITORS

---

Notices to competitors will be posted on the official notice board(s) located in the lounge of the Ravensbourne Boating Club

### 3 CHANGES TO SAILING INSTRUCTIONS

---

Any change to the sailing instructions will be posted before 0900hrs on the day it will take effect, except that any change to the schedule of races will be posted by 1800hrs on the day before it will take effect.

### 4 SIGNALS MADE ASHORE

---

4.1 Signals made ashore will be displayed at the Ravensbourne Boating Club.

4.2 A boat shall not go afloat until flag AP is displayed ashore. The warning signal will not be made before the scheduled time or less than 30 minutes after flag AP is displayed.

### 5 SCHEDULE OF RACES/CLASS FLAGS

---

5.1 On-Site Registration & Charter Boat Allocation and Collection will be as follows:

Date	Time	Event
Day 1	0900 - 0930	Registrations
	0930	Briefing
	1030	Warning Signal
Day 2	0930	Briefing
	1000	Warning Signal
	1500	No Races will be started after this time
	Afternoon	Prize Giving BBQ Dinner

### 5.2 FLEETS

(a)The NZOBA regattas have provision for up to three fleets (Bronze, Silver and Gold) depending on entry numbers. Where the entry number are less than 40, Gold and Silver may start together. For in excess of 40 entries, **Gold, Silver and Bronze** fleets will start in their own Fleet.

(b)Competitors shall nominate which fleet they want to sail in. The organising authority will then set the fleets to ensure sailors are in a fleet of equal ability

(c)The **Gold** fleet will be made up of the more experienced sailors that have raced before. The **Silver** fleet will be made up of sailors new to racing who will have a similar, but shortened, course with coaching assistance throughout racing. The **Bronze fleet** will be made up of those sailors who new to sailing and less experienced than the Silver Fleet.

(d)A competitor cannot change fleets unless approved by both the Organising Authority and Race Committee

### 5.3 FLEET FLAGS

<i>Fleet</i>	<i>Flag</i>
Gold	Yellow flag with O'pen BIC insignia
Silver	Blue flag with O'pen BIC insignia
Bronze	Green flag with O'pen BIC insignia

5.4 On the last scheduled day of racing no warning signal will be made after 1500hrs

## 6 RACING AREAS

---

Attachment 1 shows the location of racing areas.

## 7 THE COURSES

---

7.1 The diagrams in Attachment 2 show the courses, the order in which marks are to be passed, and the side on which each mark is to be left. All short courses and any long race sailed are point's races, with any long race scoring double points (see scoring SI 16).

7.2 **Adventure and Combined Races.** These events may be included but are not limited to an adventure race and other non-scoring races that may involve two-up (two person) sailing... **THESE RACES DO NOT COUNT TOWARDS THE OVERALL POINT SCORE**, but there may be spot prizes awarded courtesy of our sponsors. These races will also be made up of both the Gold Silver and Bronze Fleets Sailing together.

## 8 MARKS

---

8.1 Marks are described in Attachment. Gold & Silver fleets yellow triangular marks . Bronze fleet Red marks.

8.2 A race committee vessel signalling a change of a leg of the course is a mark as provided in SI 11.2.

## 9 STARTS

---

- 9.1** To alert boats that a race or sequence of races will begin soon, the orange starting line flag will be displayed with one sound at least **one** (1) minute before the first warning signal for the first race in a sequence of races is made.
- 9.2** Races will be started by using RRS 26 with the warning signal made Three (3) minutes before the starting signal.

<i>Minutes before starting signal</i>	<i>Visual Signal</i>	<i>Sound Signal</i>	<i>Means</i>
3	Class Flag	One	Warning Signal
2	Preparatory flag	One	Preparatory signal
1	Preparatory flag removed	One long	One minute
0	Class Flag removed	One	Starting signal

- 9.2** The starting line will be a red staff on the Committee Boat and an orange buoy on the Port side

## **10 CHANGE OF THE NEXT LEG OF THE COURSE**

- 10.1** To change the next leg of the course, the race committee will move the original mark (or the finishing line) to a new position.
- 10.2** Except at a gate, boats shall pass between the race committee vessel signalling the change of the next leg and the nearby mark, leaving the mark to port and the race committee vessel to starboard. This changes RRS 28. The Boat signalling the change will be displaying Code Flag "C" and making many sound signals

## **11 THE FINISH**

- 11.1** The finishing line will be between a red staff on the Committee Boat displaying a blue flag and an orange buoy on the Port side.

## **12 PENALTY SYSTEMS**

- 12.1** RRS 44.1, is changed so that the Two-Turns Penalty is replaced by the One-Turn Penalty.
- 12.2** Appendix P will apply [as changed by SI(s) [12.1] [and] [12.3]] [and] [12.4].
- 12.3** RRS P2.3 will not apply and RRS P2.2 is changed so that it will apply to any penalty after the first one.
- 12.4** If a boat is penalised under Appendix P2 after she has finished, she shall be given a scoring penalty of 10% without a hearing although her score will not be worse than the score for a DSQ.

## **13 TIME LIMITS AND TARGET TIMES**

- 13.1** Time limits and target times are as follows:

<i>FLEET</i>	<i>TARGET TIME</i>	<i>FINISH WINDOW</i>	<i>TIME LIMIT</i>
<i>GOLD</i>	<i>20 MINS</i>	<i>10 MINS</i>	<i>40 MINS</i>
<i>SILVER</i>	<i>20 MINS</i>	<i>10 MINS</i>	<i>40 MINS</i>

<i>BRONZE</i>	<i>20 MINS</i>	<i>10 MINS</i>	<i>30 MINS</i>
---------------	----------------	----------------	----------------

**13.2** Boats failing to finish within 10 minutes after the first boat sails the course and finishes may be scored according to their recorded position at the last turning mark rounded. This changes RRS 35, A4, and A5.

## **14 SCORING**

---

**14.1** ONE (1) race is required to be completed to constitute a series.

### **14.2 Number of races excluded from the series score (drops)**

- a) When fewer than five (5) races have been completed, a boat's series score will be the total of her race scores.
- b) When five (5) to eight (8) races have been completed, a boat's series score will be the total of her race scores excluding her worst score.
- c) When eight (8) or more races have been completed, a boat's series score will be the total of her race scores excluding her two worst scores.

**14.3** Any Long Race shall be scored as double points

## **15 SAFETY REGULATIONS**

---

**15.1** Boats not leaving the shore for a scheduled race shall promptly notify the Slip Warden.

**15.2** All Competitors are required to sign on before leaving the slipway and sign off upon returning to shore with the Slip Warden [DP]

**15.3** A boat retiring from racing shall notify the Race Committee before leaving the racing area, or if that is not possible, shall notify the Slip Warden as soon as possible after returning ashore. [DP]

## **16 EVENT ADVERTISING**

---

Further to NoR 2.1, boats shall display event advertising supplied by the organising authority as follows: N/A

## **17 OFFICIAL BOATS**

---

Official boats will be identified at the first briefing

## **18 SUPPORT BOATS**

---

**18.1** Except when requested to participate in rescue operations, team leaders, coaches, and other support persons shall stay outside areas where boats are racing and are restricted to a 5 knot speed limit, from the time of the preparatory signal for the first start of a sequence of starts until all boats have finished or the race committee signals a postponement or abandonment of all races. The areas the boats are racing in is defined as the area inside the course and within 100 metres of any mark, lay line, starting line, finishing line or any area where any boat that is racing is sailing or may sail. [DP]

- 18.2 Attention is drawn the relevant local council bylaws regarding wearing of lifejackets and other restrictions.
- 18.3 When flag V (with a long sound signal) is displayed on a committee boat all support boats are requested to remain afloat and assist all sailors.

## 19 PRIZES

---

Prizes will be given as follows:

Special Award:	Gold, Silver and Bronze
(Awarded in recognition of qualities such as sportsmanship, perseverance, assistance to others, positive attitude)	
Under 19:	1st, 2nd and 3rd
Under 13:	1st, 2nd and 3rd
Silver Fleet (if sailed)	1st, 2nd and 3rd
Bronze Fleet (if sailed)	1st, 2nd and 3rd

## 20 INSURANCE

---

See NoR 13.

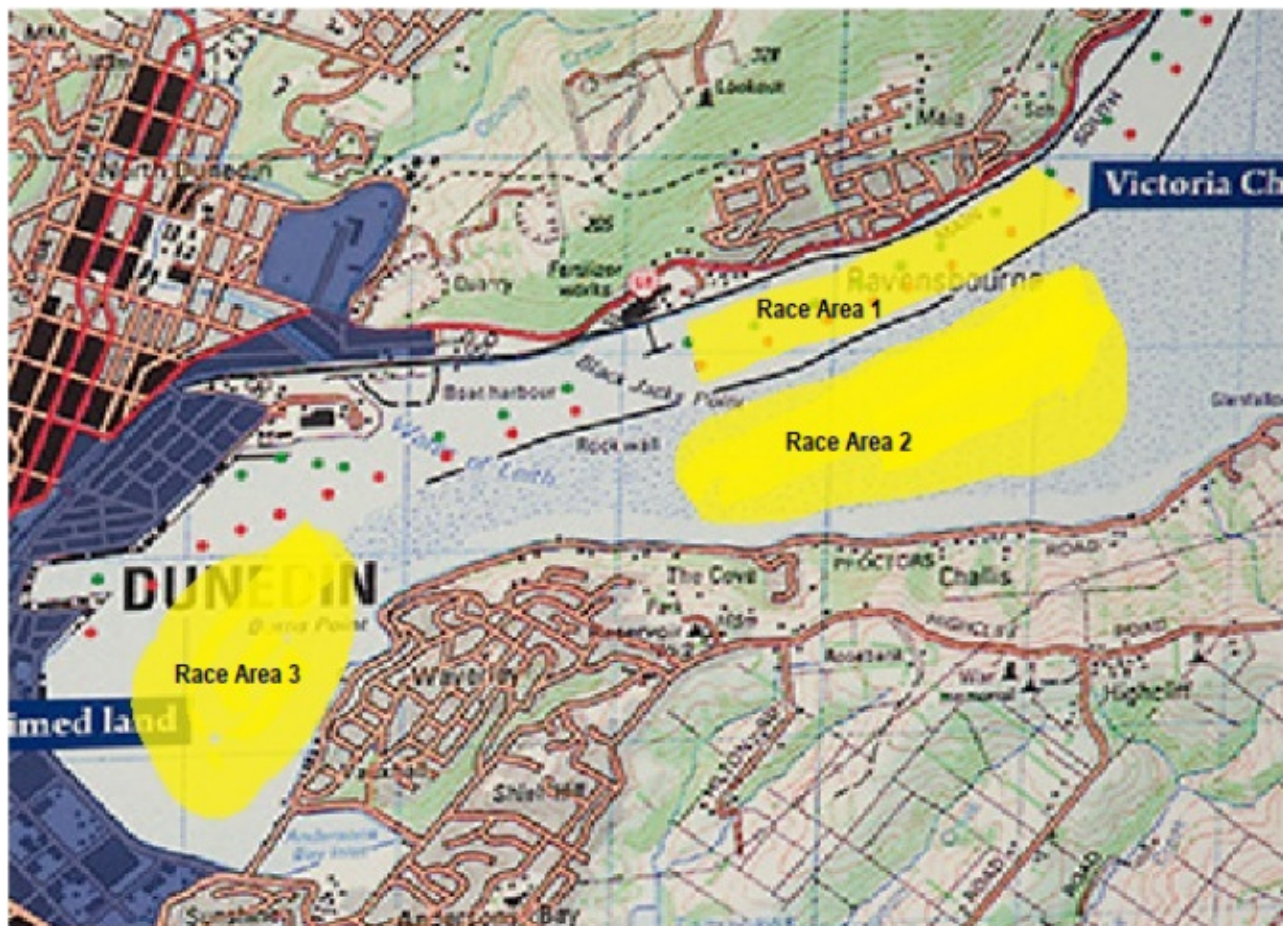
## 21 DISCLAIMER OF LIABILITY

---

- 21.1 All those taking part in the regatta do so at their own risk and responsibility. Specific attention is drawn to RRS 4, which states; "The responsibility for a boat's decision to participate in a race or to continue racing is hers alone".
- 21.2 The OA (Organising Authority), sponsors, New Zealand International O'pen BIC Class Association and the race committee are not responsible for any damage or injury either afloat or ashore.
- 21.3 **Risk Warning:** The OA advises competitors, legal guardians and anyone who participates in yachting events conducted by the OA that participation in the sport of yachting, whether racing or otherwise, can be dangerous and can result in harm, personal injury and property damage. The OA is not responsible for any harm or injury suffered by any person in any yachting event conducted by the OA of whatever nature. All participants (and their legal guardians) acknowledge that competing in yachting events may be dangerous and may result in harm or personal injury and participate in such events aware of such dangers and voluntarily accept any risk of harm.

21.4

## Attachment 1 Racing Area



## Attachment 2

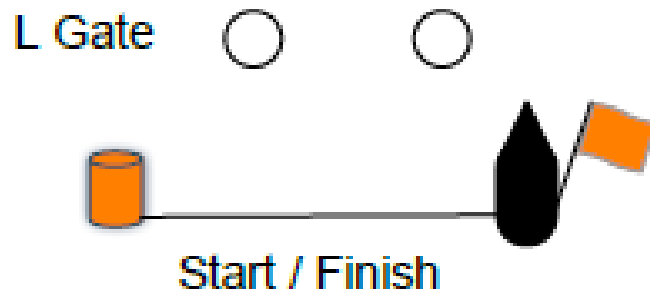
### Courses

Race lengths are targeted to be 20 minutes long (for the first finishers in Gold fleet)

Where breeze drops and race length target is significantly threatened, the race committee may decide to shorten the course at a gate. This will be discussed at briefing, specific signals will be used to notify sailors of these changes.

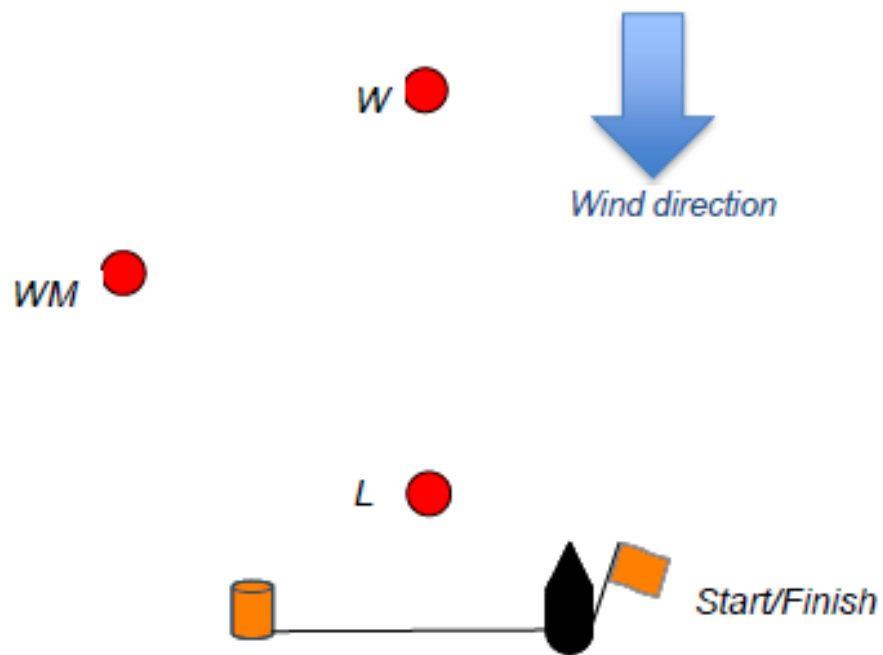
**\*Note** – These courses are only guidelines and can be changed at any time by the race committee. If courses are changed, they will be explained at the daily briefing.

**Course One – Gold & Silver**



**Gold: Start – W (port) – L Gate – W (port) – Finish**  
**Silver: Start – W (port) – Finish**

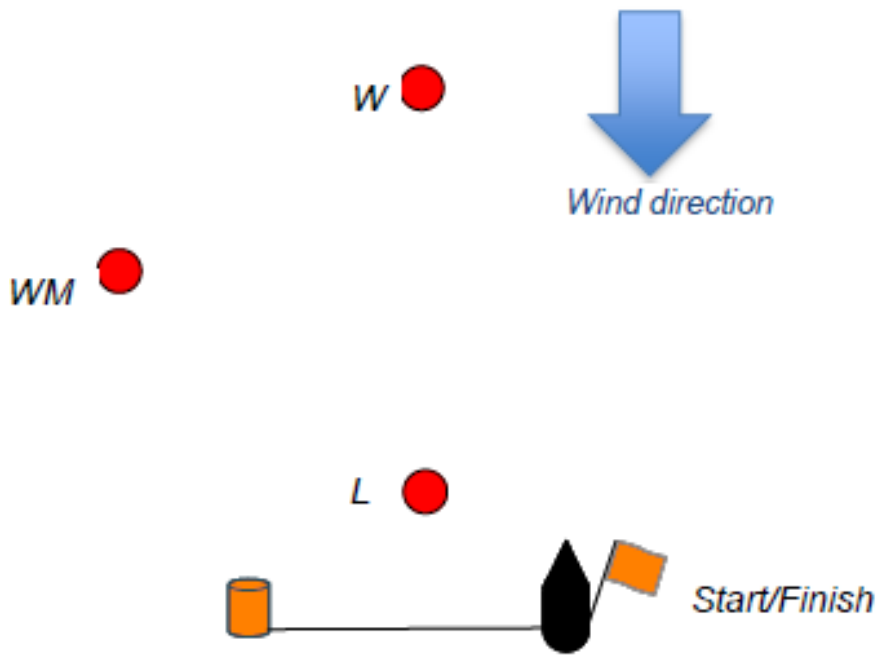
**Course Two (Gold and Silver):**



**Gold: Start - W (port) – WM (port) – L (port) – W (port) – WM (port) – Finish**  
**Silver: Start - W (port) – WM (port) – Finish**



**Course Three (Bronze): Single Triangle**

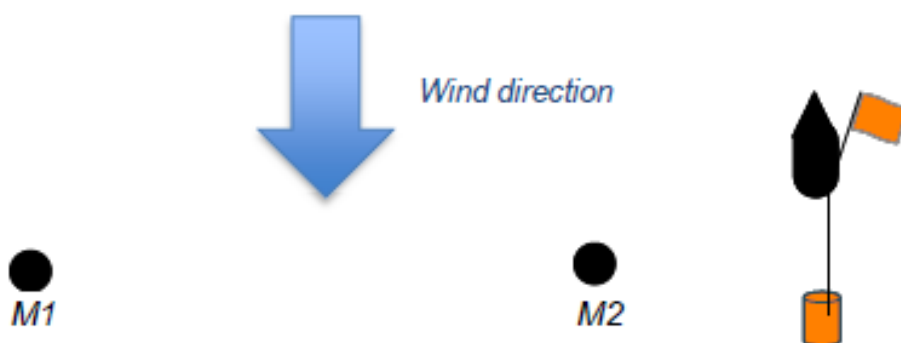


**Start - W (port) – WM (port) – Finish**

**Course Four (Gold & Silver Fleet)**

Points scoring Long Distance Race - 'Down-wind blast'

**Course Five (Bronze only):**



**Start – M1 (starboard) – M2 (port) – M1 (starboard) – Finish**

## Attachment 3

### O'pen BIC Class on the Water Umpiring rules

This addendum is a modified Addendum Q that has been approved by ISAF in accordance with rule 86.2 and ISAF Regulation 28.1.3.

**Version:** January 21, 2013 amended for the Open BIC Class

These sailing instructions change the definition Proper Course, and rules 20, 28.2, 44, 60, 61, 62, 63, 64.1, 65, 66, 70, 78.3 and B5.

### Q1 CHANGES TO RACING RULES

*Additional changes to rules are made in instructions Q2, Q3, Q4, and Q5.*

#### Q1.1 Changes to the Definitions and the Rules of Part 2 and Part 4

- (a) Add to the definition Proper Course: 'A boat taking a penalty or manoeuvring to take a penalty is not sailing a *proper course*.'
- (b) When rule 20 applies, the following arm signals are required in addition to the hails:
  - (1) for 'Room to tack', repeatedly and clearly pointing to windward; and
  - (2) for 'You tack', repeatedly and clearly pointing at the other boat and waving the arm to windward.

#### Q1.2 Changes to Rules Involving Protests, Requests for Redress, Penalties and Exoneration

- (a) The first sentence of rule 44.1 is replaced with: 'A boat may take a One-Turn Penalty when she may have broken a rule of Part 2 (except rule 14 when she has caused damage or injury) or rule 31 or 42 while *racing*.'
- (b) Rule 60.1 is replaced with 'A boat may protest another boat or request redress provided she complies with instructions Q2.1 and Q2.4.'
- (c) The third sentence of rule 61.1(a) and all of rule 61.1(a)(2) are deleted.
- (d) Rule 64.1(a) is changed so that the provision for exonerating a boat may be applied by the umpires without a hearing, and it takes precedence over any conflicting instruction of this addendum.
- (e) Rules P1 to P3 shall not apply.

### Q2 PROTESTS AND REQUESTS FOR REDRESS BY BOATS

**Q2.1** While racing, a boat may protest another boat under a rule of Part 2 (except rule 14) or under rule 31 or 42; however, a boat may only protest under a rule of Part 2 for an incident in which she was involved. To do so she shall hail 'Protest' at the first reasonable opportunity.

**Q2.2** A boat that protests as provided in instruction Q2.1 is not entitled to a hearing. Instead, a boat involved in the incident may acknowledge breaking a rule by taking a One-Turn

Penalty as described in rule 44.2. If the protested boat does not take a penalty voluntarily, an umpire will decide whether to penalize any boat and signal the decision as provided in instruction Q3.1.

**Q2.3** At the finishing line, the race committee will promptly display flag B with one sound. Two minutes later flag B will be removed with one sound.

**Q2.4** A boat intending to protest

(a) another boat under a rule other than instruction Q3.2 or Q4.2 or a rule listed in instruction Q2.1,

(b) protest another boat under rule 14 if there was contact that caused damage or injury, or

(c) request redress

shall hail the race committee before or during the display of flag B. The same time limit applies to protests under instructions Q5.4 and Q5.5. The protest committee may extend the time limit if there is good reason to do so.

**Q2.5** The race committee will promptly inform the protest committee about any protests or requests for redress made under instruction Q2.4.

### **Q3 UMPIRE SIGNALS AND IMPOSED PENALTIES**

**Q3.1** An umpire will signal a decision as follows:

(a) A green and white flag with one long sound means 'No penalty.'

(b) A red flag with one long sound means 'A penalty is imposed or remains outstanding.' The umpire will hail or signal to identify each such boat.

(c) A black flag with one long sound means 'A boat is disqualified.' The umpire will hail or signal to identify the boat disqualified.

**Q3.2** (a) A boat penalized under instruction Q3.1(b) shall take a One-Turn Penalty as described in rule 44.2.

(b) A boat disqualified under instruction Q3.1(c) shall promptly leave the course area.

### **Q4 PENALTIES AND PROTESTS INITIATED BY AN UMPIRE; ROUNDING OR PASSING MARKS**

**Q4.1** When a boat

(a) breaks a Part 2 rule except rule 14.

(b) breaks rule 42,

(c) gains an advantage despite taking a penalty,

(d) breaks rule 31 and does not take a penalty,

(e) commits a breach of sportsmanship, or

(f) fails to comply with instruction Q3.2 or to take a penalty when required to do so by an umpire,

an umpire may penalize her without a protest by another boat. The umpire may impose one

or more One-Turn Penalties to be taken as described in rule 44.2, each signalled in accordance with instruction Q3.1(b), or disqualify her under Q3.1(c), or report the incident to the protest committee for further action. If a boat is penalized under instruction Q4.1(f) for not taking a penalty or taking a penalty incorrectly, the original penalty is cancelled.

**Q4.2** (a) A boat shall not round or pass a mark on the wrong side. If she does so, she may correct her error as provided in rule 28.2 only if she does so before she rounds or passes the next mark or finishes.

(b) When a boat breaks instruction Q4.2(a) and fails to correct her error before rounding or passing the next mark or finishing, an umpire may disqualify her under instruction Q3.1(c).

**Q4.3** An umpire who decides, based on his own observation or a report received from any source, that a boat may have broken a rule, other than instruction Q3.2 or Q4.2(a) or a rule listed in instruction Q2.1, may inform the protest committee for its action under rule 60.3. However, he will not inform the protest committee of an alleged breach of rule 14 unless there is damage or injury.

**Q5 PROTESTS; REQUESTS FOR REDRESS OR REOPENING; APPEALS; OTHER PROCEEDINGS**

**Q5.1** No proceedings of any kind may be taken in relation to any action or non-action by an umpire.

**Q5.2** A boat may not base an appeal on an alleged improper action, omission or decision of the umpires or the protest committee. In rule 66 the third sentence is changed to 'A *party* to the hearing may not ask for a reopening.'

**Q5.3** (a) Protests and requests for redress need not be in writing.

(b) The protest committee may take evidence and conduct the hearing in any way it considers appropriate and may communicate its decision orally.

(c) If the protest committee decides that a breach of a rule has had no effect on the outcome of the race, it may impose a penalty of points or fraction of points or make another arrangement it decides is equitable, which may be to impose no penalty.

**Q5.4** The race committee will not protest a boat, except following a report under rule 43.1(c) or 78.3.

**Q5.5** The protest committee may protest a boat under rule 60.3. However, it will not protest a boat for breaking instruction Q3.2 or Q4.2(a), a rule listed in instruction Q2.1, or rule 14 unless there is damage or injury.